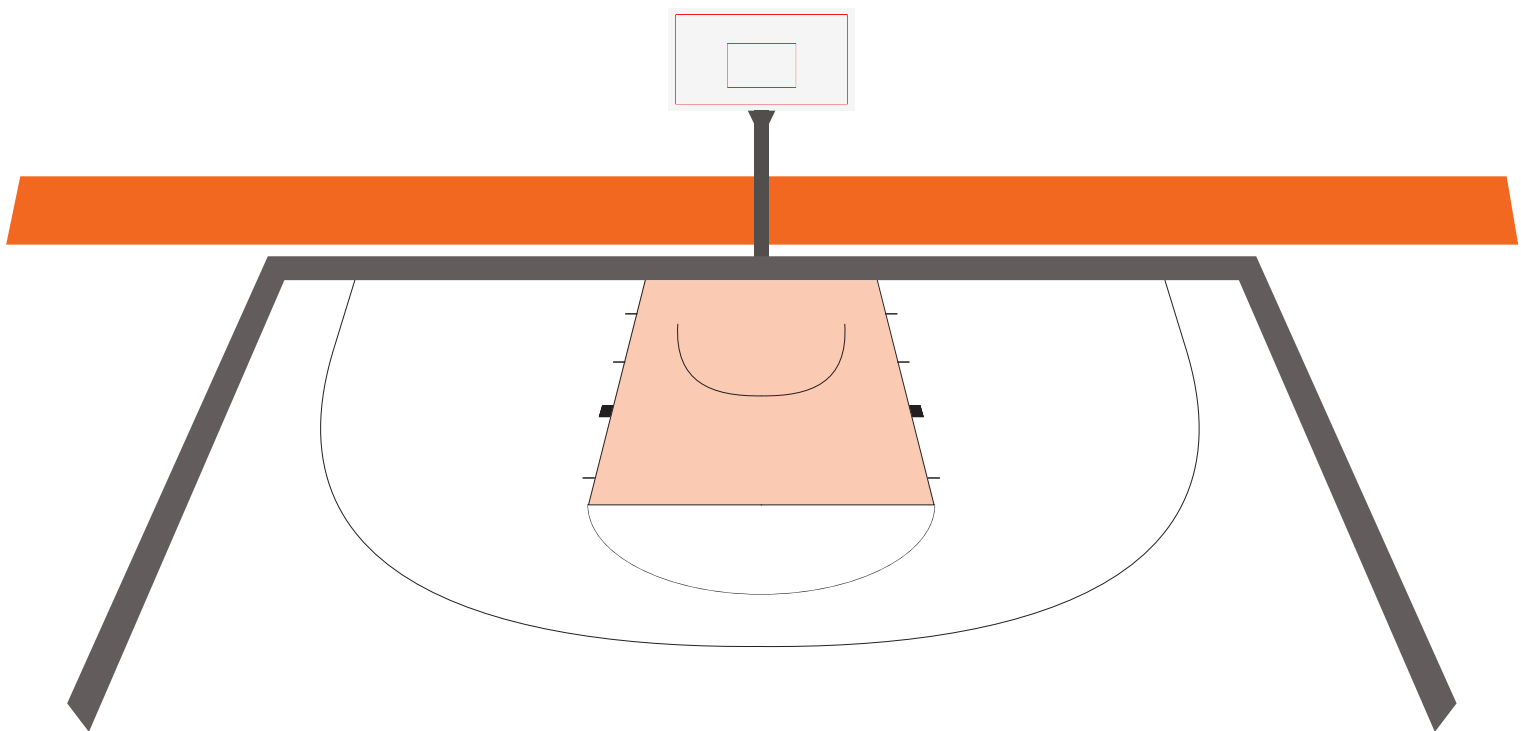


Areas of Responsibility 2PO/3PO



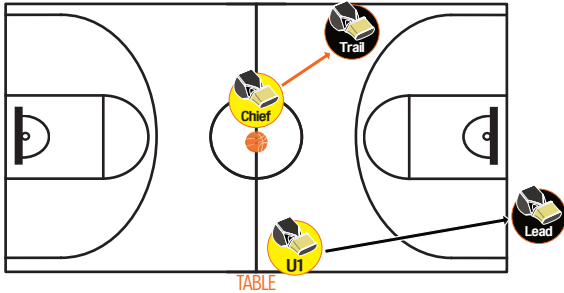
Development & Guidance

Starting the Game - Positions

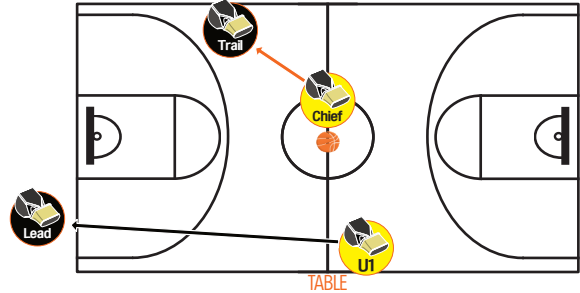
Crew chief to become **trail** in any direction of play.

Umpire 1 to become **lead** in any direction of play.

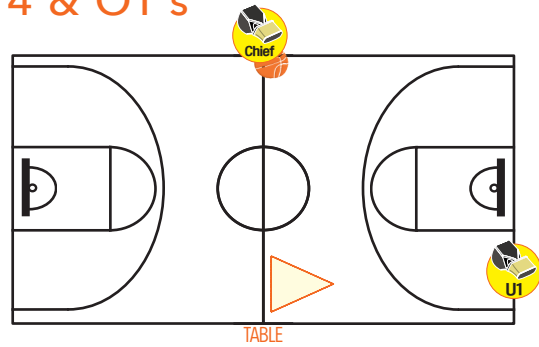
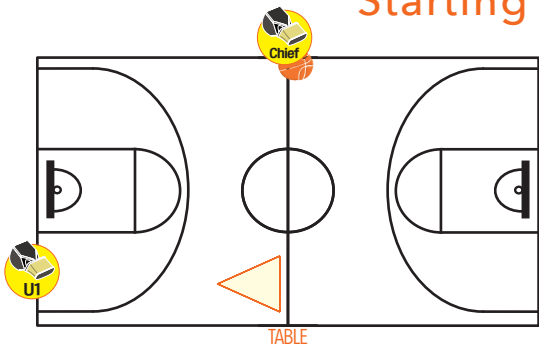
Play to Chief's left 



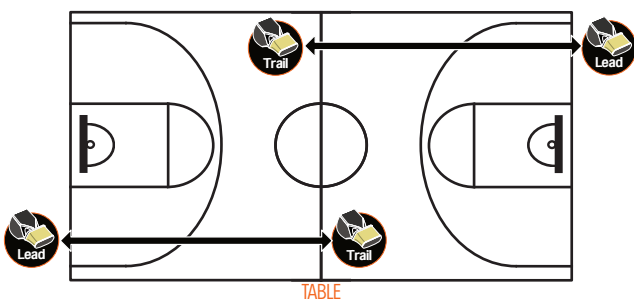
 Play to Chief's right



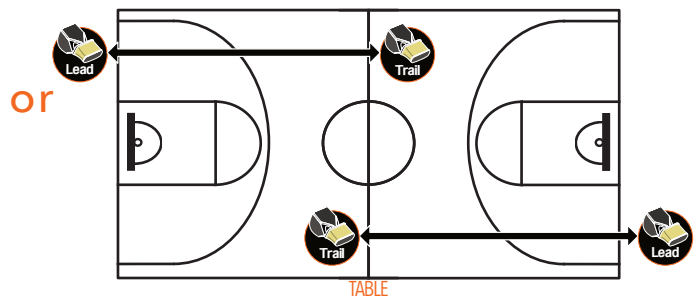
Starting Qtr 2, 3, 4 & OT's



Stay the same side!



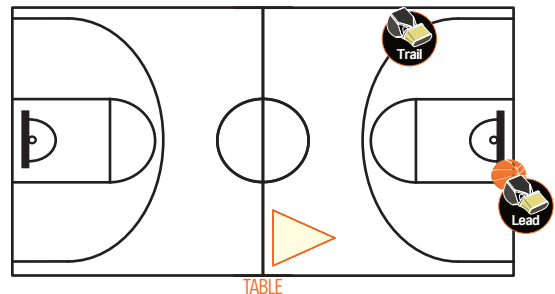
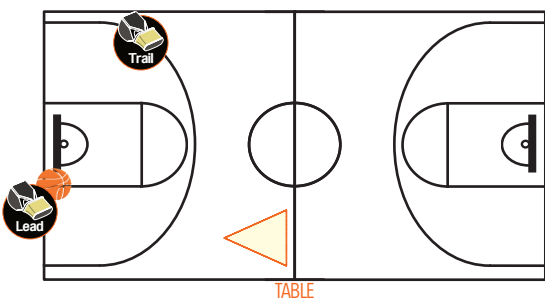
Lead and trail are to stay in the same position until something is called for you to rotate sides.



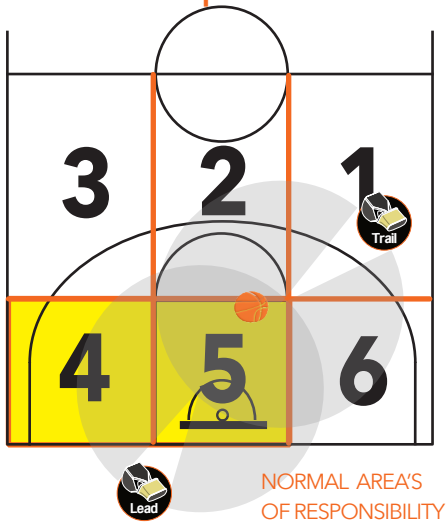
Free-Throw administration

The lead official administering the ball to the free-throw shooter is always table side

The 'trail' official is always opposite the table in-line with the free-throw line.



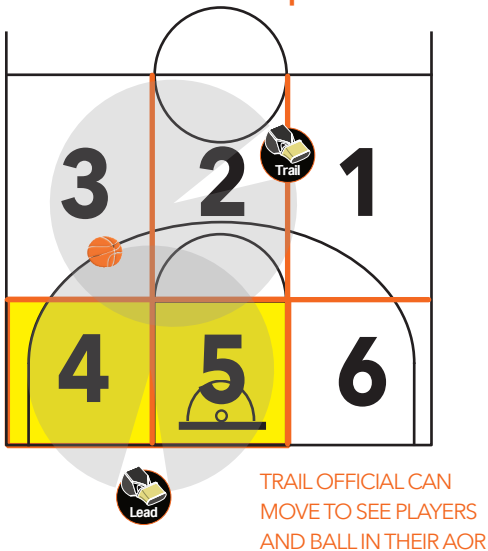
Lead Set-Up lead left of the basket



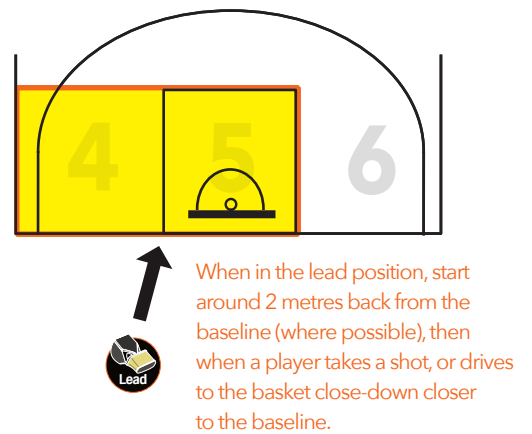
Out of Bounds (Opposite lead)



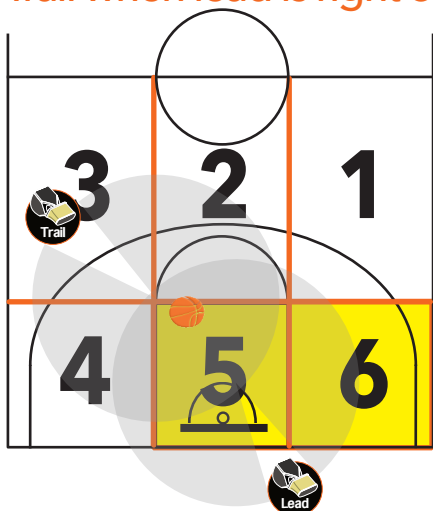
Trail Movement position



Lead Close-down

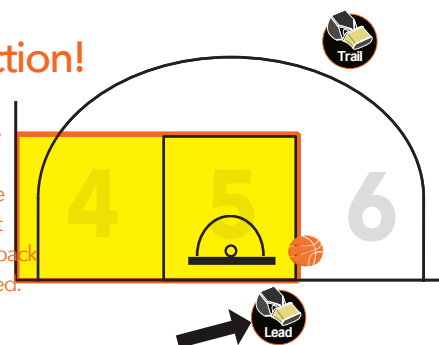


Trail when lead is right of the basket

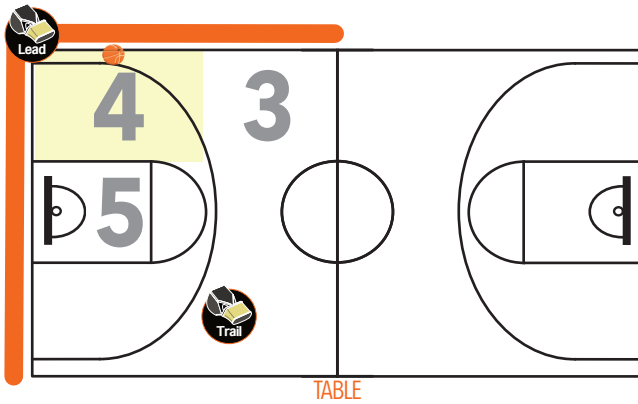


Lead to the Action!

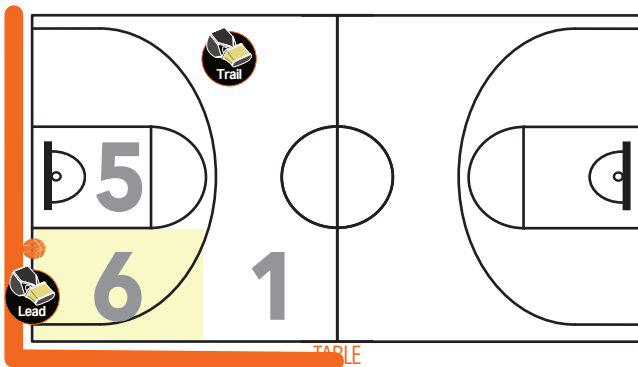
If the lead is on the opposite side of box 5 when there is action or a block play - move over to officiate it! Trail is not to rotate, and lead to move back after the action has happened.



AoR: Area's of Responsibility (2PO) MECHANICS

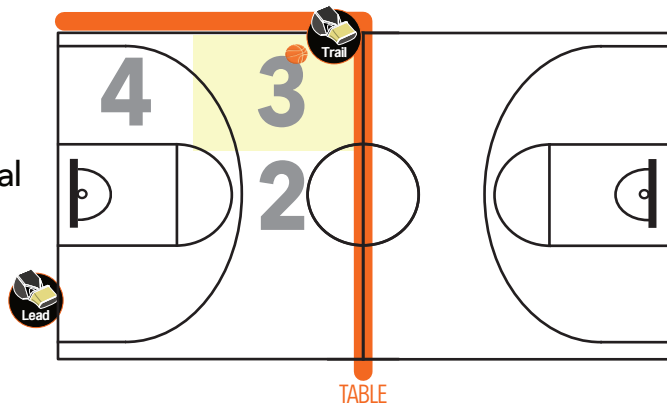


OUT OF BOUNDS - Box 4 - Lead Official

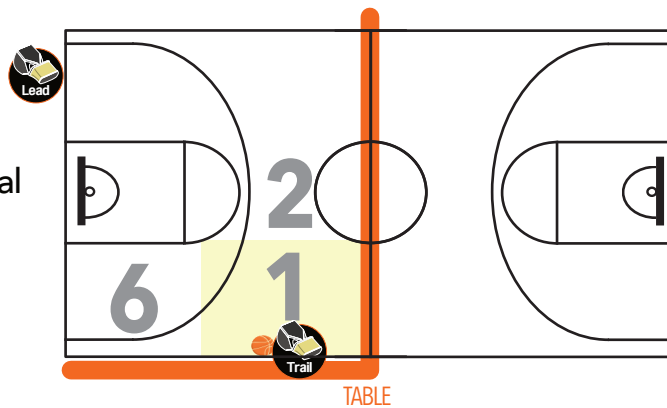


OUT OF BOUNDS - Box 6 - Lead Official

OUT OF BOUNDS - Box 3 - Trail Official

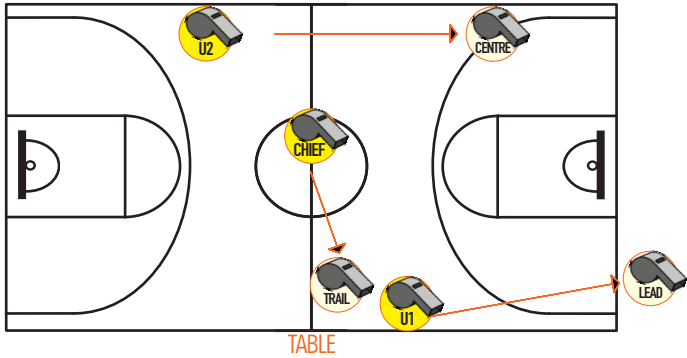


OUT OF BOUNDS - Box 1 - Trail Official

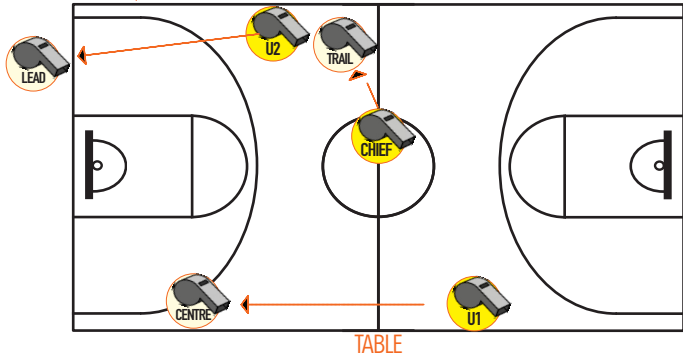


AoR: Area's of Responsibility (3PO) 3 PERSON OFFICIATING

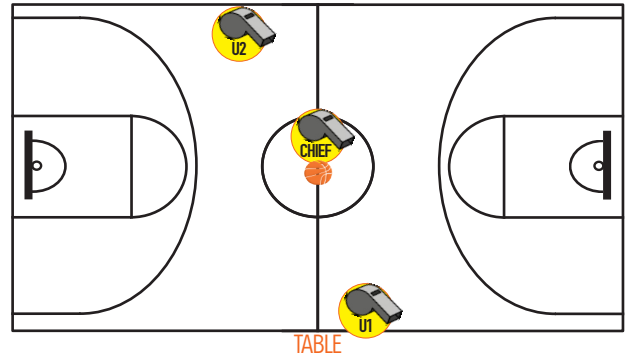
Play to Chief's left



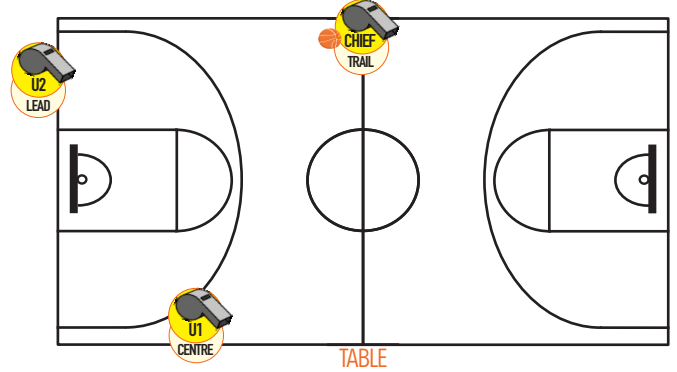
Play to Chief's right



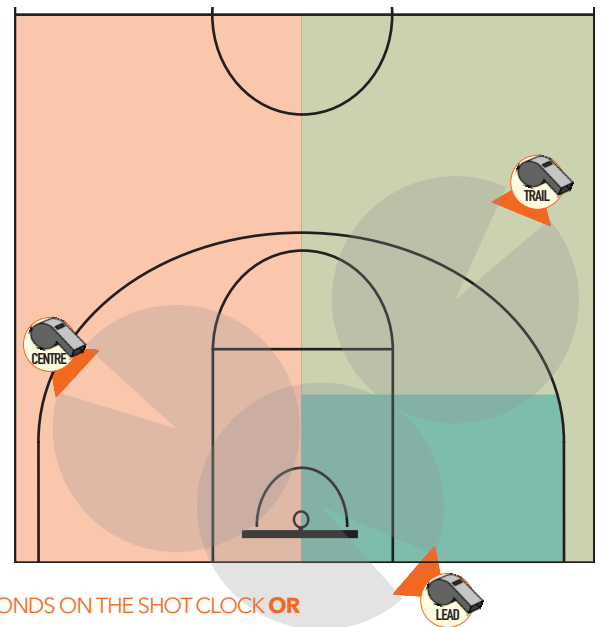
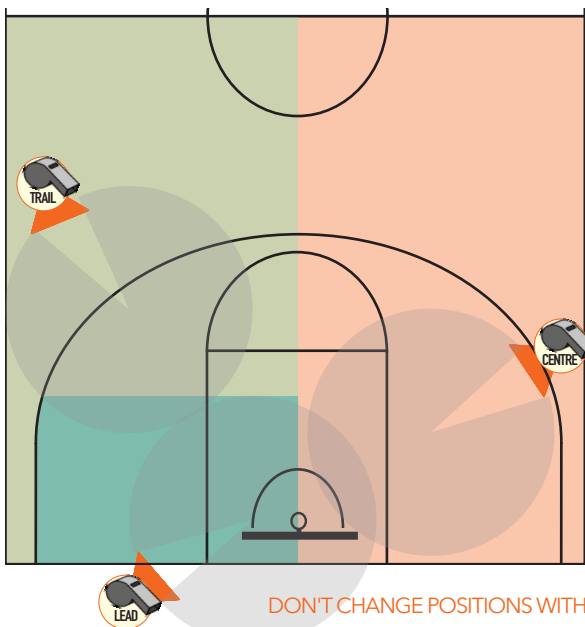
Starting the Game - Positions



Starting Q2, Q3, Q4 & OT



AoR: Area's of Responsibility (3PO) 3 PERSON OFFICIATING



DON'T CHANGE POSITIONS WITH LESS THAN TEN SECONDS ON THE SHOT CLOCK OR IF YOU THINK THE PLAYER IS ABOUT TO SHOOT THE BALL.



Your Basketball League C.I.C. Development & Guidance

